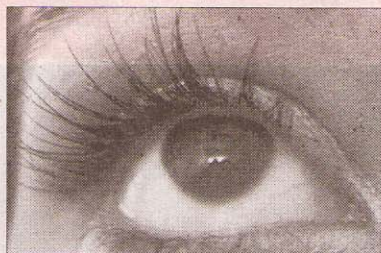


Enhance your party persona with extended eyelashes

Extrême Lashes™ Eyelash extensions are the latest craze, providing semi-permanent eyelashes. A synthetic eyelash is bonded one by one to your existing eyelash for a completely natural weightless look and feel. The initial procedure is approximately 90 minutes. The results are lengthened and thickened lashes without the need of mascara.

Extreme lashes come in many different lengths and colors to suit every eye, whether it's a



natural look for everyday or an eye popping glamorous look for fun! A natural eyelash typically falls out every 60 to 90 days, and is naturally replaced with the growth of a new lash. There are touchup appointments at 2-4 week intervals.

Extreme lashes are completely safe, and the procedure is pain free. The lashes are resistant to water, sweat and tears, leaving little need for lifestyle adjustments. Call for a complimentary consultation to learn how to have the same eyelash extensions that all of Hollywood is raving about.

For a complimentary consultation for Extreme lashes, Please contact Lisa Topham R.N., P.C. at 203 831 8029, and her address is 91 East Ave. in Norwalk.

